

Party Time - 1

1 - 9. sorularda boş bırakılan yere uygun gelen kelime ya da ifadeyi işaretleyiniz.

1. The day after Sunday is - - - - .

- A) Saturday
- B) Monday
- C) Tuesday
- D) Thursday

2.



- A) use the computer
- B) go to the cinema
- C) look at the book
- D) watch television

3. Tim - - - - for his birthday party.

- A) sees a doctor
- B) plays football
- C) invites his friends
- D) goes to bed

4. Sarah : Can I leave the classroom?

Teacher : - - - -

Sarah : I feel bad.

- A) Why?
- B) Really?
- C) Of course.
- D) You're welcome.

5. Timothy : When is your birthday?

Sam : - - - - .

- A) I have a party
- B) It's on 3rd April
- C) I need two candles
- D) It's at 2 o'clock

6. Jane : - - - - ?

Jack : No. But we must buy a cake and lots of drinks.

- A) Do we need a clown for your party
- B) What do we need for the birthday party
- C) Can I have my birthday party here
- D) Can you buy a big chocolate cake

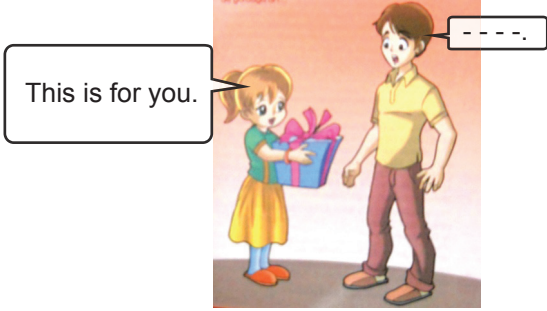
Party Time - 1

7. **Amy** : Let's go to the cinema.

Andrew : I'm sorry, I can't. - - - -.

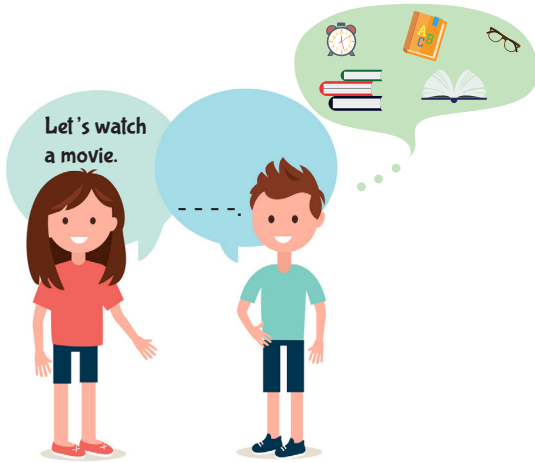
- A) I read a book every day
- B) I can decorate the house
- C) I must do my homework
- D) I like football and tennis

8.



- A) Thank you
- B) You are welcome
- C) See you tomorrow
- D) Nice to see you

9.



- A) I love sci-fi movies
- B) See you at the cinema
- C) I must do my homework
- D) Then, we can buy popcorn

10.

Please join my birthday party.

ANNA

Place : Star Cafe

Date : 23rd March, Saturday

Time : 14:00



When is Anna's birthday party?

- A) On 23rd March.
- B) Anna and her friends.
- C) At a café.
- D) In the evening.

11. Verilen cümleyi tabloya uygun tamamlayan seçeneği işaretleyiniz.

	BIRTHDAY	NEEDS
CAROL	March	A cake Beverages
ASHLEY	August	A clown
MATT	September	Invitation cards
TOM	May	Balloons Candles

Matt's birthday is on the - - - - month of the year.

- A) 3rd
- B) 8th
- C) 9th
- D) 5th

12. Yanlış eşleştirmenin yapıldığı seçeneği işaretleyiniz.

A)



CANDLES

B)



CLOWN

C)



CAKE

D)



BALLOONS

